



# SPECIFICATION SHEET

## PVE 50 PR

**Powerful, Versatile and Efficient Piling Rig**

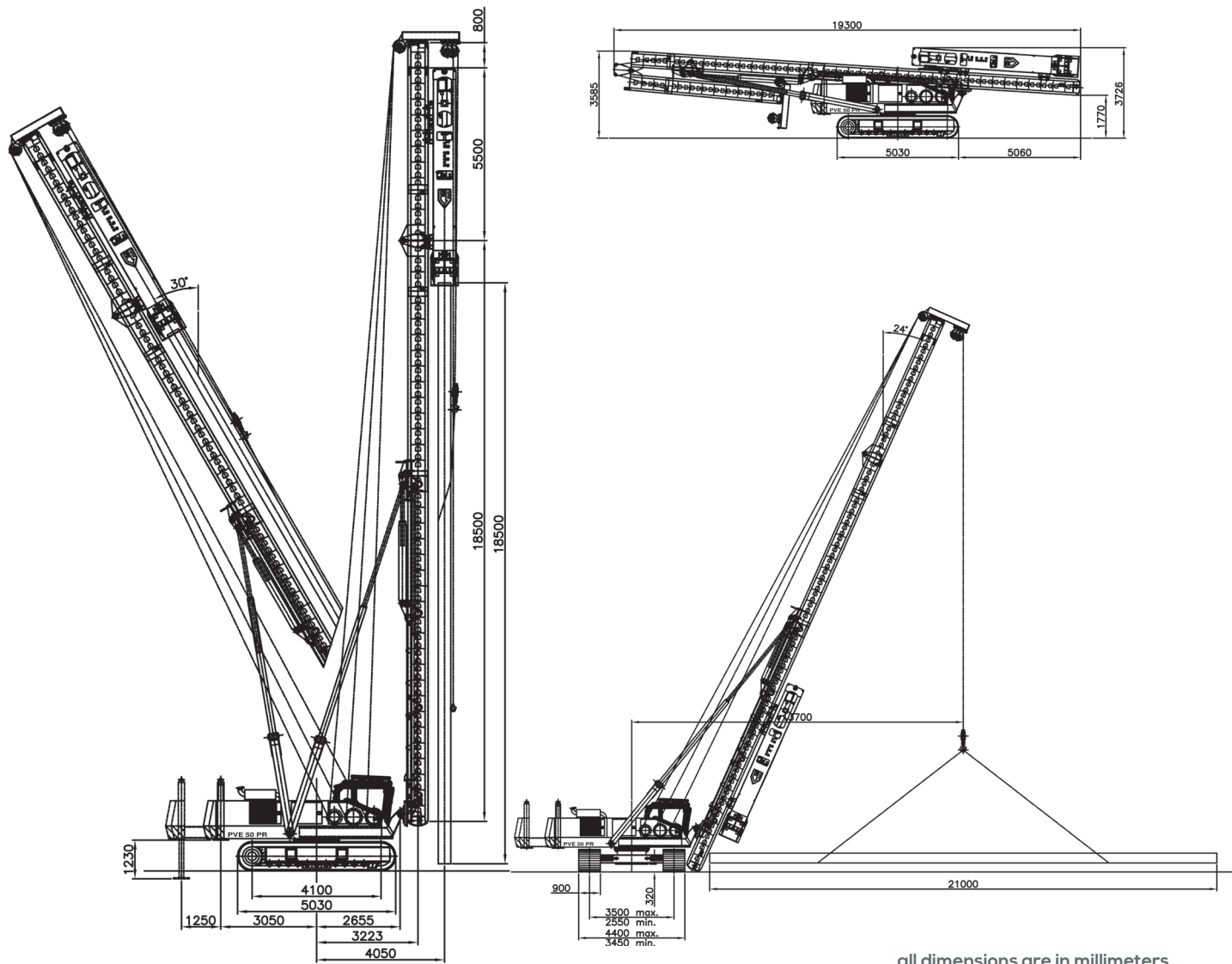
High capacity  
Very reliable

Very quick to assemble  
CAT engine

Fast and efficient  
New type of cabin



# PVE 50 PR



all dimensions are in millimeters

## Technical specifications

Max pile & hammer weight	40,786 lbs	(20.4 US Ton)
Hammer winch capacity	26,456 lbs (13.2 US Ton) / 2-part	30,860 lbs (15.43 US Ton) / (single-line) - Zollern/Free Fall
	(2-part or single line)	
Pile winch capacity	26,456 lbs (13.2 US Ton) / 2-part	30,860 lbs (15.43 US Ton) / (single-line) - Zollern
Optional aux winch capacity	8,818 lbs (4.4 US Ton)	(single line)
Standard leader length	81.4 ft	(Opt. 3m Extension)
Maximum leader length	91.2 ft	(71.0 ft Pile)
Diesel engine	Caterpillar C-7.1 Teir 4 Final	
Rated engine power	250 HP	1800 RPM
Hydraulic system	Open Loop	
Hydraulic pumps	Bosch-Rexroth	(Dedicated pumps for hammer and valve bank)
Hydraulic valve blocks	Bosch-Rexroth	
Transport width	11.32 ft	(Hyd. Retracting Tracks)
Transport length	63.32 ft	(Hyd. Folding Leader)
Transport height	11.96 ft	(Includes Hammer)
Recommended hammer	PVE 6 NL	(53,110 ft.lbs)
Weight base machine (excl. hammer)	112,436 lbs	(56.2 US Ton)

